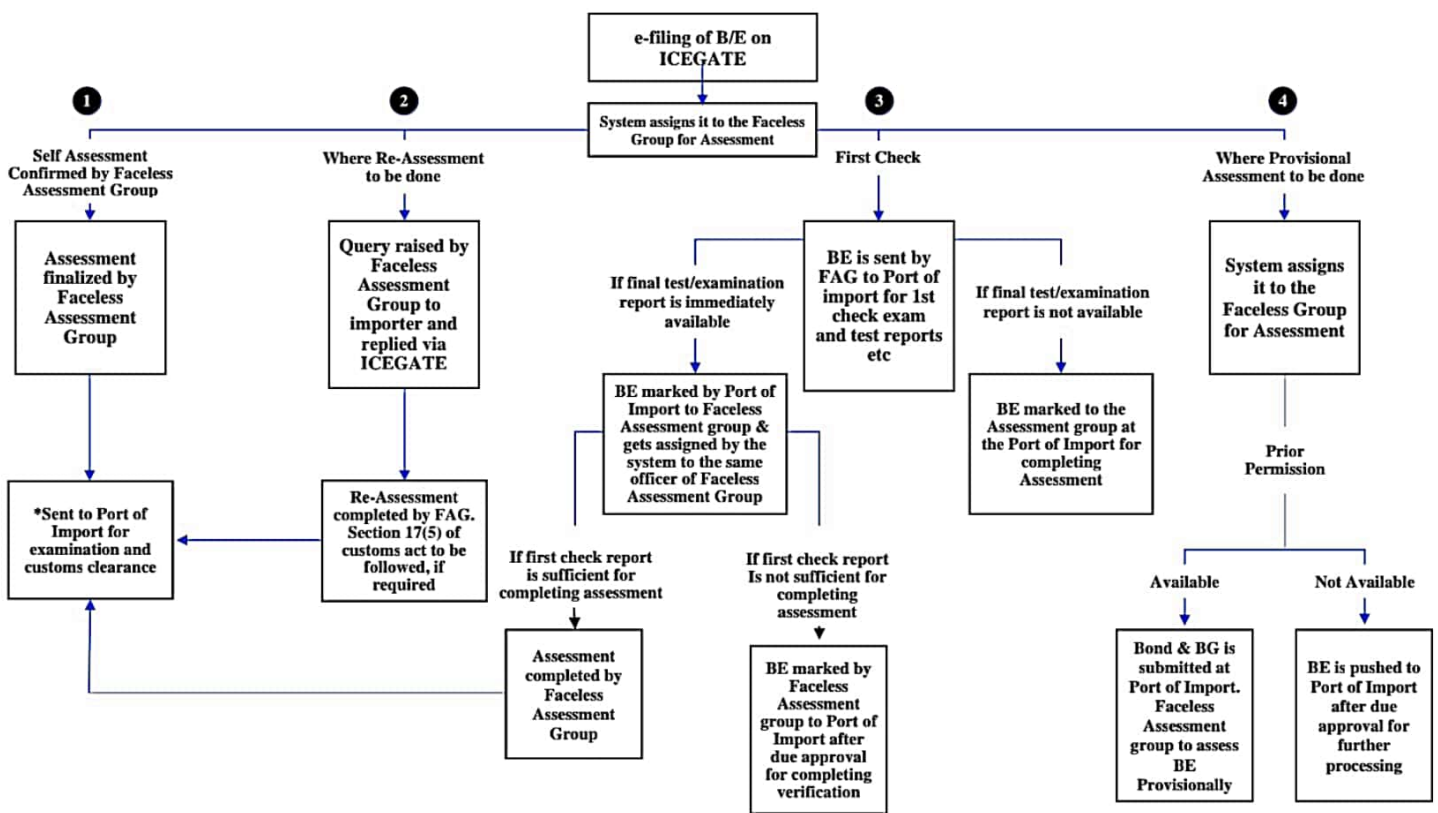


## Annexure A

SI No	SCENARIO	WORK-FLOW
1	<b>First Check</b>	Approved for First Check by Faceless Assessment Groups, goes to local shed (Port Verification Unit) for examination, comes back to Faceless Assessment Group for assessment.
2	<b>Provisional Assessment</b>	Where prior permission is available, Faceless Assessment Group to assess it. Bond and BG to be registered at local port of import. If no prior permission, BE to be sent to port of import for assessment.
3	<b>Reassessment for valuation</b>	Either through query and consent. Or in case First Check is given for valuation by CE etc., then like case 1.
4	<b>Reassessment for Classification where testing is required</b>	If ordered by Faceless Assessment Group as first check, then test memo to be sent by port of import and send back the BE to Faceless Assessment Group with test report. Alternately, can be sent to port of import for provisional assessment
5	<b>First check but for provisional assessment</b>	Approved for 1 <sup>st</sup> Check by Faceless Assessment Group but assessment cannot be finalised by Faceless Assessment Group for want of further inputs/ test reports. To be sent to port of import for provisional assessment.

## Annexure B



\* Any recalling or reassessment of BE after this stage will be dealt with at Port of Import  
Page 11 of 11